

# **APLAC - Its Role And Structure**

**Michael Fraser  
APLAC Secretary**

**Third meeting of lites.asia  
Sydney, NSW**

**6 June 2011**

# APLAC - ITS ROLE & STRUCTURE

- What is APLAC?
- The Role of APLAC
- Structure of APLAC
- Accreditation
- APLAC Mutual Recognition Arrangement
- APLAC MRA - supporting G2G MRAs and trade in the APEC region

# Asia Pacific Laboratory Accreditation Cooperation

- Established 1992
- Mutual Recognition Arrangement (MRA) inaugural signing 1997
- Inaugural signing of extended MRA for inspection November 2003
- Inaugural signing of extended MRA for RMP December 2007
- Incorporated in 2006: APLAC Constitution

# APLAC Membership

- Laboratory, inspection body and reference material producer (RMP) accreditation bodies in APEC economies
- Laboratory, inspection body and reference material producer (RMP) accreditation bodies in other economies with approval of three-fourths majority
- Commitment to compliance with ISO/IEC 17011

# APLAC Membership ctd

- Laboratories accredited to ISO/IEC 17025 (ISO 15189 for medical laboratories)
- Inspection bodies accredited to ISO/IEC 17020
- RMPs accredited to ISO Guide 34 in combination with ISO/IEC 17025

# Current APLAC Membership

- All APEC economies except Chile
- Also Bangladesh, India, Mongolia, Pakistan, Sri Lanka
- 37 full members
- 8 associate members

# APLAC's Role

- Development of laboratory, inspection body and RMP accreditation procedures and practices in the APEC region
- Promotion of laboratory, inspection body and RMP accreditation as a trade facilitation tool
- Assistance to developing accreditation systems

# APLAC's Role

- Recognition of competent test and calibration facilities, inspection bodies and reference material producers in the APEC region

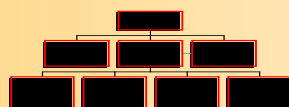
## APLAC's Role

- Cooperation with other regional laboratory and inspection body accreditation organisations such as EA, IAAC, SADCA
- Strong links with APEC SCSC & other APEC Specialist Regional Bodies, APLMF, APMP, PAC, PASC
- APLAC is a recognised Regional Cooperation Body Member of ILAC

# APLAC's Structure

- General Assembly
- Board of Management
- MRA Council
- 5 permanent Committees
  - Proficiency Testing Committee
  - Public Information Committee
  - Technical Committee
  - Training Committee
  - Nominations Committee

# APLAC's Structure



# APLAC's Structure

- Board of Management
  - meets at least twice a year
  - oversees management of APLAC's activities
  - oversees the work of the APLAC committees
- Committees report to members at each annual General Assembly

# Proficiency Testing

- Calibration
- Measurement (some with APMP)
- Testing
- Inter-regional Programs

# Public Information

- “APLAC News Notes” published every 3 months by a different APLAC member each time
- Publicity and information material
- APLAC web site: <http://www.aplac.org>

# Technical

- Guidance and interpretation documents
  - APLAC documents
    - management reviews; internal audits
    - reporting compliance with a specification
    - measurement uncertainty in testing
    - guidance on ISO/IEC 17020
    - guidance for food testing laboratories
    - guidance on accreditation of RMPs
  - adoption of ILAC and EA documents
- Input into ILAC documents

# Training

- Accreditation body staff
- APLAC & ILAC MRA evaluators
- Train the trainers
  - Technical assessors
  - Laboratory staff

# APLAC - Primary Objective

- Acceptance of test, calibration and inspection reports and reference material certificates amongst all signatories' economies
  - demands mutual confidence in technical competence
- Confidence cannot be legislated

# APLAC - Subsidiary Objectives

- Information exchange
- Exchange of experts
- Training
- Proficiency Testing

# APLAC MRA Signatories

- NATA
- CALA
- SCC
- CNAS
- HKAS
- NABL
- KAN
- JAB
- IAJapan
- VLAC
- KOLAS
- Standards Malaysia
- ema
- IANZ
- PNGLAS
- PNAC

# APLAC MRA Signatories ctd

- PAO
- AAC Analitica
- SAC
- SLAB
- TAF
- DSS
- DMSc
- NSC-ONAC
- AIHA-LAP, LLC
- A2LA
- ACLASS
- LAB
- IAS
- NVLAP
- PJLA
- BoA
- JAS-ANZ

# Accreditation

- Assessment of laboratory, inspection body and RMP performance against international criteria (ISO/IEC 17025; ISO/IEC 17020; ISO Guide 34)
- Means of determining competence of laboratories, inspection bodies and RMPs to perform specific measurements, calibrations, tests or inspections, or to certify reference materials competently
- Formal recognition of that competence

## Accreditation ctd

- 3<sup>rd</sup> party attestation related to a conformity assessment body conveying formal demonstration of its competence to carry out specific conformity assessment tasks (ISO/IEC 17000)
- Key phrases
  - competence
  - specific.... tasks

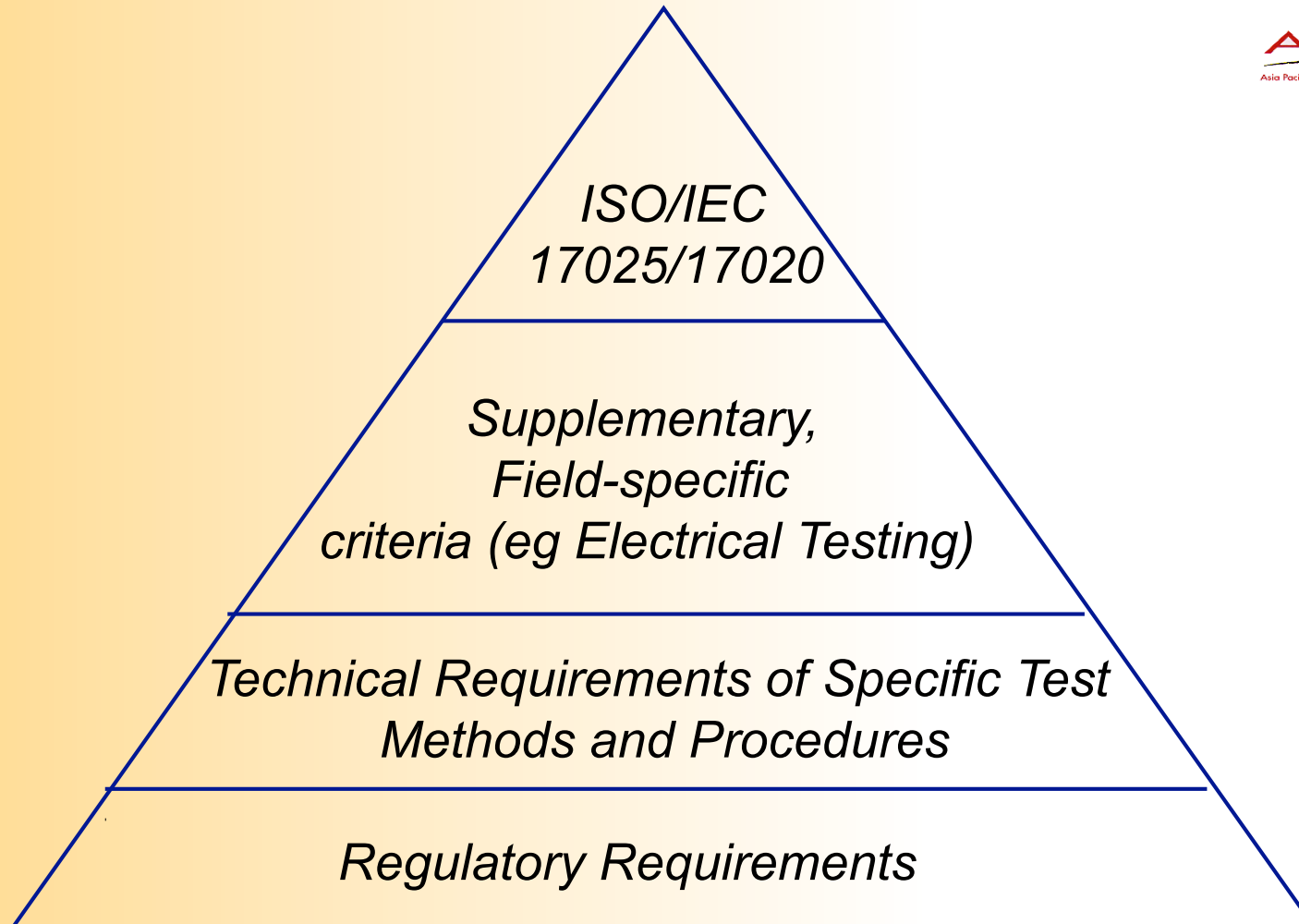
# Accreditation ctd

- Demonstrated competence
  - Specific tests
  - Defined measurements
  - Types of calibrations
  - Particular testing techniques
  - Specific types of inspections
  - Specific types of reference materials

# Accreditation ctd

- Technical competence
- Integrity
- Transparency (as defined by WTO TBT)
- Fairness
- Scope of accreditation
  - products; types of test parameters types of inspections; matrices
  - measurement techniques, range, accuracy
  - test specification; test method

# Accreditation Hierarchy of Criteria



- 1 General technical competence and systems compliance criteria**
- 2 Additional field-specific criteria, eg for emc testing laboratories**
- 3 Additional test, calibration, inspection method criteria**
- 4 Additional, regulator-specific criteria (eg reporting formats, labelling etc)**

# APLAC MRA

- Single multilateral MRA for testing and calibration, 1997
- Extended to include inspection, 2003
- ISO 15189 separated out, 2007
- Extended to include RMP, 2007
- Replaced network of bilateral MRAs
- Regional component of global ILAC Arrangement, November 2000 (test and calibration only)

## APLAC MRA ctd

- Facility accredited by one MRA partner has equivalent competence to facility accredited by other partners
- **Each signatory acknowledges equivalence of all other signatories**
- Signatories demonstrate compliance with ISO/IEC 17011

# APLAC MRA - Assisting Trade

- APLAC MRA enhances acceptance of test, calibration and inspection reports, and RM certificates amongst signatory economies
- APLAC MRA signatories recognise equivalence of each others' accredited facilities
- APLAC MRA is an international recognition for accredited laboratories, inspection bodies and RMPs

# APLAC MRA - Assisting Trade

- APLAC MRA reduces or eliminates need for re-testing or re-inspection of imported goods
- Entry into global ILAC Arrangement (for testing and calibration only)

# APLAC MRA & Regulators

- Laboratories and inspection bodies accredited for compliance with domestic & foreign regulations
- MRA evaluations assure competence to assess to domestic & foreign regulations
- APLAC MRA underpins APEC G2G MRAs

# Contact APLAC

- web site: <http://www.aplac.org>
- email: [aplac@nata.com.au](mailto:aplac@nata.com.au)