



Updates on MVE Scheme for the Philippine Energy Standards and Labeling (ES&L) Program

Amelia M. de Guzman

*OIC-Director, Energy Research and Testing Laboratory Services
Philippine Department of Energy*

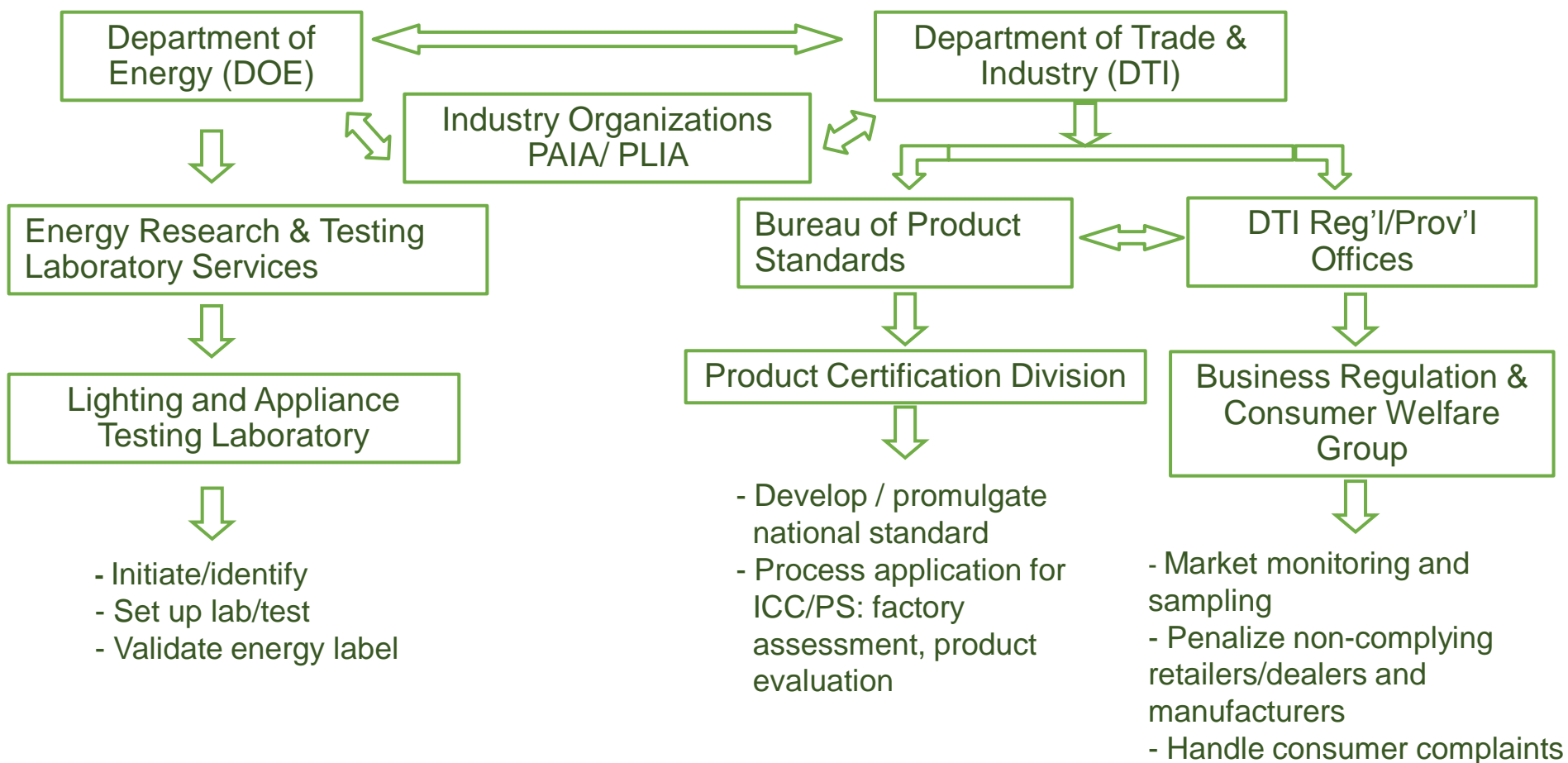


Program Coverage

The Philippines ES&L Program, launched in 1992, currently covers six types of consumer products:

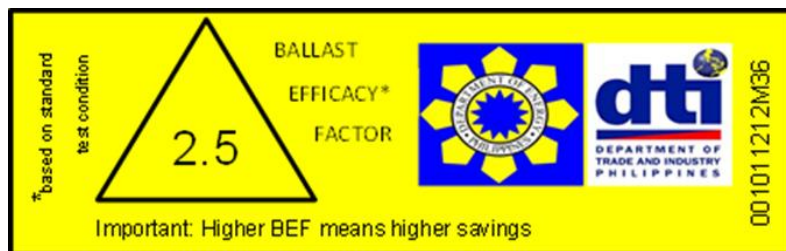
- 1) Air conditioners (window type and split type)
- 2) Refrigerators
- 3) Self-ballasted compact fluorescent lamps (CFL's)
- 4) Linear fluorescent lamps
- 5) Circular fluorescent lamps
- 6) Fluorescent lamp ballasts (electro magnetic and electronic)

Institutional Arrangement



Sample of Energy Label

Compact fluorescent lamps



Ballast for fluorescent lamps

Brand Name: ABC

Model/ Type: SP15W

Lamp Specifications¹

Light Output	900 lumens
Power Consumption	15 watts
Efficacy	60 lumens per watt
Average Life	8000 hours

For lamps of similar light output, higher efficacy means more energy savings

¹when tested at standard test condition

¹rated average life at 50% failure

³ The minimum efficacy set by the Government for this type of lamp is 57 lumens per watt

CTRL NO. 001021212PD15



Sample of Energy Label

Brand name: **LAMPS** EFFICACY* **80**

Model/ Type: **LFL**

Light output, lumens: **2880**

Wattage rating, watts: **36**

*based on standard test condition

Important: For lamps with same wattage rating, Higher Efficacy means more saving
THE MINIMUM EFFICACY SET BY THE GOVERNMENT FOR THIS TYPE OF LAMP IS 78 lumens per watt

001061212T36D

Linear fluorescent lamps

Brand name: **LAMPS** EFFICACY* **70**



Model/ Type: **FCL**

Light output, lumens: **2240**

Wattage rating, watts: **32**

*based on standard test condition

Important: For lamps with same wattage rating, Higher Efficacy means more saving

001091212T32D

Circular fluorescent lamps

Present State of Compliance

DOE-DTI Joint Market Monitoring Team findings/concerns:

- Confirmed reports on the sale of products without energy labels in various sales outlets.
- Lack of awareness and understanding of the energy label by the promodizers* and sales staff.
- Stakeholders' concern on the lack of market sampling.

Strengthening MVE for the Philippines

The SWITCH Philippines Policy Support Project

3-month activity for the strengthening of MVE scheme of the ES&L Program in the Philippines

Objective:

To develop guidelines for an MVE scheme for the Philippines ES&L program for the country's market to transition into more energy efficient products

Strengthening MVE for the Philippines

Activities:

1. Literature research
2. Market monitoring
3. Stakeholders consultation

Literature Research

- Department orders
- Executive Orders
- Memorandum
- Circulars

Market Monitoring: *Developing a manual on MVE system for the Philippines to cover*

- **Monitoring:** Monitoring forms
Inspection schedule
Criteria for non-compliance
Issuances
Monitoring report
- **Verification:** Sampling methodology and procedure
Test method
Evaluation criteria
Disposal procedure for test samples
Test report design
- **Enforcement:** Issuances regarding penalties
Publication of violators

Stakeholder Consultation

Consultation on completed manual will be carried out with:

- Importers
- Civil society
- Government
- Public

<Event title and date>

Updates on Philippines LED Program

DOE submitted a Project Proposal to Department of Budget and Management for 2015:

- Title: **Institutional Capacity Building for Performance Testing of LED for general lighting**
- Budget: PhP 13 M (USD 292,000)
- Major Outputs
 - Test facility
 - Competent laboratory personnel
 - PNS MEPS and energy label
 - Proficiency testing

Thank You

Terima Kasih